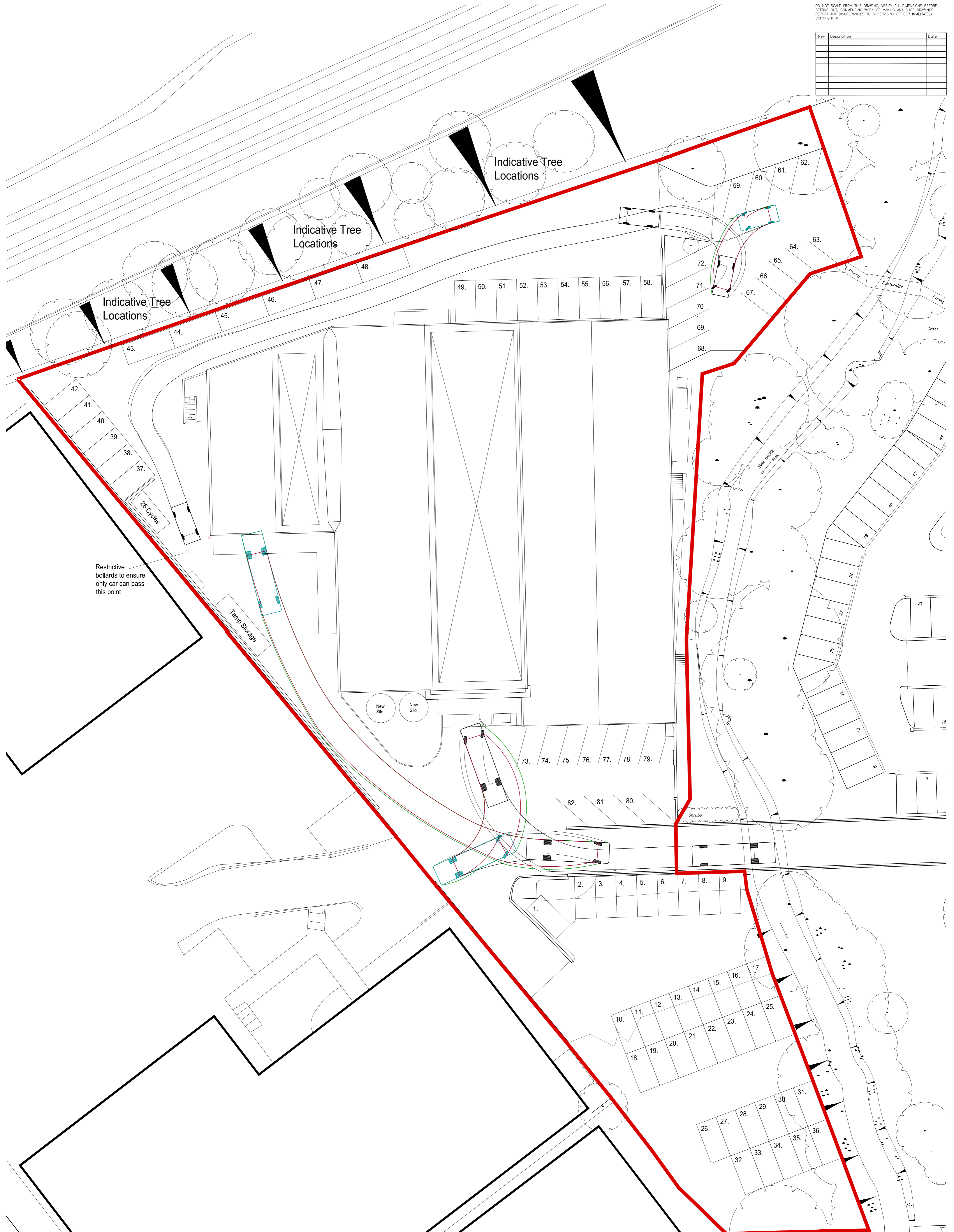


| Rev | Description | Date |
|-----|-------------|------|
| | | |
| | | |
| | | |
| | | |
| | | |
| | | |
| | | |
| | | |
| | | |
| | | |



Indicative Tree Locations

Indicative Tree Locations

Indicative Tree Locations

Restrictive bollards to ensure only car can pass this point

Temp Storage

New Silo

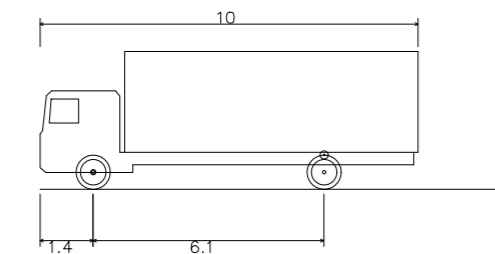
New Silo

DMU approach

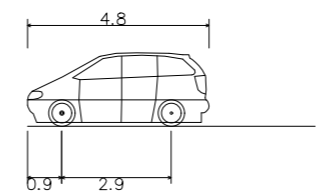
Flow

Shrubs

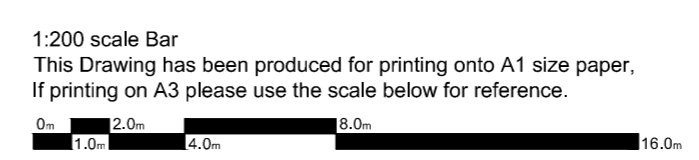
Ground Floor Plan



FTA Design HG Rigid Vehicle (1998)
 Overall Length 10,000m
 Overall Width 2,500m
 Overall Body Height 3,645m
 Min Body Ground Clearance 0,440m
 Track Width 2,470m
 Lock to lock time 3,00s
 Kerb to Kerb Turning Radius 11,000m



Standard Design Vehicle (SDV)
 Overall Length 4,800m
 Overall Width 2,000m
 Overall Body Height 1,950m
 Min Body Ground Clearance 0,100m
 Track Width 2,000m
 Lock to lock time 4,00s
 Wall to Wall Turning Radius 65



1:200 scale Bar
 This Drawing has been produced for printing onto A1 size paper, If printing on A3 please use the scale below for reference.

Day Tanner Ltd ARCHITECTURE AND PLANNING

CLIENT Intersurgical www.daytanner.co.uk
 3 Thames Court
 2 Redfield Avenue
 Reading
 Berkshire
 RG1 8EQ
 0118 989 0808
 info@daytanner.co.uk
 JOB Ready Power Site, Intersurgical, Wokingham, RG41 2QP
 DRG VEHICULAR TRACKING PLAN
 SCALE 1:200 @ A1 DRAWN P Bonney DATE October 2018 3485/208

This page is intentionally left blank